

# 2022

## ANNUAL REPORT



**achper**  
NEW SOUTH WALES

# CONTENTS

About ACHPER NSW .....	3
2022 at a Glance .....	5
President and Vice President’s Report 2022 .....	6
Chief Executive Officer’s Report.....	9
Our Board.....	12
Professional Teachers’ Council NSW Award .....	15
ACHPER NSW Staff .....	16
2022 Professional Learning .....	17
Inaugural K-12 PDHPE Conference .....	21
New PDHPE Masterclass Series .....	24
Early Career Teacher Conference Returns .....	26
Thank You .....	29
ACHPER NSW Awards .....	32
Membership and Awards .....	36
Financial Reports.....	38





## ABOUT ACHPER NSW

The Australian Council for Health, Physical Education and Recreation (ACHPER) is a national professional association representing people who work in the areas of health education, physical education, recreation, sport, dance, community fitness or movement sciences. A membership-based non-profit organisation, we are governed by a volunteer board and have a network of state and territory branches.

ACHPER NSW is committed to delivering quality PDHPE professional learning. Funds generated from our activities are used to develop programs, resources and members support.



# STRATEGIC PURPOSE

## HERE TO HELP THE PDHPE COMMUNITY



### OUR VISION

Quality health and physical education for every student in NSW & ACT



### OUR PURPOSE

Support educators to deliver innovative and effective health and physical education programs



### PRIORITY GROUPS

Health, physical education and recreation educators:

- Primary and secondary teachers
- Early career teachers
- University students



### STRATEGIC PILLARS

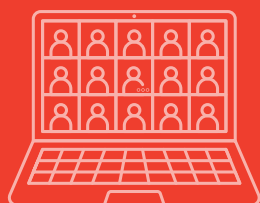
- Professional learning – build capacity
- Resources – inform and support
- Community – foster connection and network
- Advocacy – be a voice



### OUR VALUES

- Integrity
- Collaboration
- Excellence
- Innovation

# 2022 AT A GLANCE



## PROFESSIONAL LEARNING EVENTS

**46** EVENTS  
 • 25 ONLINE  
 • 21 IN PERSON

**88** PRESENTERS

**1,976** TEACHERS



## MEMBERSHIP

**449\*** MEMBERS  
 \* As at February 2023

## YEAR 12 – FIRST IN SUBJECT STUDENT (PDHPE AND CAFS)

CERTIFICATES ISSUED

**53** CAFS  
**75** PDHPE



Each year, ACHPER NSW provides certificates to our members for their high achieving students

## COMMUNICATION

Website: [www.achpernsw.com.au](http://www.achpernsw.com.au)



**4,277** FACEBOOK FOLLOWERS

**1,585** TWITTER FOLLOWERS

**323** INSTAGRAM FOLLOWERS



## NEW PDHPE MASTERCLASS SERIES

**8** MASTERCLASSES

**238** TEACHERS ATTENDED



## INAUGURAL K-12 PDHPE CONFERENCE

TWO-DAY CONFERENCE  
 November 2022

**270** DELEGATES



## RELAUNCH EARLY CAREER TEACHER CONFERENCE

ONE-DAY CONFERENCE  
 May 2022

**97** DELEGATES



## POPULAR PROFESSIONAL DEVELOPMENT

CURRICULUM reform update

FIRST TIME Teaching Stage 6 PDHPE

HSC marking SIMULATION

HSC ENRICHMENT Days

## PRESIDENT AND VICE PRESIDENT'S REPORT 2022



BRAD McALLISTER  
President



KRISTY O'MAHONY  
Vice President

How wonderful it was to have a year where we could get back to face to face workshops, and our year certainly finished with a renewed enthusiasm for a wide range of our professional learning offerings. This highlights the relational nature of the work we do, and the benefits of connecting beyond our screens. The PDHPE space is one with plenty on the horizon, including imminent syllabus changes, and the ACHPER NSW Office and Board have been busy preparing to support teachers across NSW.

We highlight the significant work and partnership of our ACHPER NSW Office staff and volunteer board members, who go above and beyond to provide meaningful professional learning experiences and support for teachers. The experience, talent and wisdom of our team, and their passion for our work, has meant that we continue to provide high quality workshops and conferences, that most importantly, are highly rated by participants.

A key aspect of the ACHPER model is providing opportunities for teachers and leaders in schools to help develop and run workshops and lead the learning of others, and we are so grateful for all those who put their hands up to help out. It is a real honour and privilege to have an insight into the work and passion of the people behind ACHPER, and we encourage those looking to get involved to take the next step and reach out.

We continue to focus on our core priorities and we have outlined below some of the work undertaken this year.

### **Professional Learning**

The core of our work is the provision of professional learning programs for teachers right across the state. You will see outlined throughout this report some key statistics of the many offerings provided by ACHPER NSW. Participation grew significantly over the course of 2022, and once again our professional learning offerings were very highly rated by participants.

### **Resources**

ACHPER NSW is committed to ensuring our teachers have access to quality teaching resources and professional learning. Our Masterclasses have been well received, and have been delivered by experts in education and health. They have provided opportunities for PDHPE teachers and leaders of wellbeing to discuss current issues facing young people. Our blog and newsletter continues to keep teachers updated on ideas and best practices, and we acknowledge and thank those who have contributed to this.

### **Community**

In 2022, ACHPER NSW recognised the outstanding contributions educators have made to enhancing healthy and active lifestyles. Categories for the ACHPER NSW [PD]HPE Awards were; Early career teachers, Secondary teacher, and School/Faculty. Other teachers were also recognised and highly commended for their contribution to making a difference in their schools and communities.

### **Advocacy**

ACHPER NSW has continued to engage in advocacy work around the NSW Curriculum and Australian HPE Curriculum. We believe that teachers need to be heard and engaged in any curriculum review process, and that professional learning for teachers to implement any new curriculum is critical for the intentions of the curriculum to be achieved.

ACHPER NSW remains in a strong financial position, which is quite significant considering the challenging few years we have navigated. We are well positioned to provide support for teachers with the upcoming changes to the syllabus, and continue to lead and innovate with our professional development options.



The Board finished working through a process of updating our constitution to be more contemporary and reflect the current operations of ACHPER NSW. This is being presented at the 2023 AGM for adoption and we thank all those involved in this work.

ACHPER NSW thrives on the ongoing support of the PDHPE community, and particularly our members. We thank all those involved in developing, leading and participating in our workshops and engaging with our organisation. Thanks for your ongoing support as we work together to provide the best possible health and physical education to the students in our care.

Brad McAllister  
President  
ACHPER NSW Branch

Kristy O'Mahony  
Vice President  
ACHPER NSW Branch







## CHIEF EXECUTIVE OFFICER'S REPORT

TRACY PUCKERIDGE

Welcome to the 2022 annual report. What a fantastic year it has been! It was great to be able to get back face to face to networking and collaboration

Congratulations and well done to all our PDHPE/HPE educators. This year came with new challenges including teacher shortages throughout NSW and ACT. But as ever, students are at the heart of your teaching and educators continued to work hard and deliver for their students.

### Professional Learning

ACHPER NSW worked with the PDHPE community to deliver innovative and flexible professional development through face to face, online, after school and in-school formats. Forty-six workshops were delivered to over 1976 educators throughout NSW and ACT. Our online presence is still favourable amongst our community for our regional and remote educators, and this continues to strengthen in numbers.

**Key highlights this year were the ACHPER NSW conferences:**

- Early Career Teachers Conference – targeted teachers in their first five years of teaching and was well received and attended by near 90 delegates.
- K-12 PDHPE Conference – was a sell-out with close to 300 educators coming along. The energy and enthusiasm of educators being back together to network in-person was exciting.

We are in the planning process for both conferences next year.

### Resources and community

Demand for our consultancy services has increased over the last year. Organisations are reaching out to collaborate on a variety of work including curriculum alignment projects and resources. We would like to thank National Centre for Implementation Science, ACT directorate, Department of Education for their ongoing relationship and collaboration to ensure the Health and Physical Education KLA continues to have the rigour and quality it deserves.

We introduced PDHPE Masterclasses in 2022, delivering new value to our members. Eight masterclasses were delivered by academics or experts in their field, focussing on new health and physical education research. Masterclasses increased membership by at least 10 percent over the last twelve months.

### Advocacy

ACHPER NSW continues to work with the Professional Teacher's Council and advocate to the NSW Minister for Education and NESAs around the curriculum reform. In late 2022 we wrote to the Minister and NESAs about the Human Movement and Science curriculum, seeking clarification on the consultation processes and release timelines. We plan to follow up and keep members and the PDHPE community updated.

### Thank you to our many supporters

I would like to thank our partners Tennis NSW & ACT and RHSport for their support, along with all our conference exhibitors throughout the year. Thank you to our ACHPER NSW board and ACT sub-committee for all the time they volunteer to ACHPER NSW, their wisdom, experience, and expertise they bring to the organisation.

Special thank you goes to our President Brad McAllister, who has been on the ACHPER NSW board for just over ten years, for his time and dedication to ACHPER NSW. In the last two years Brad has also taken on being part of the ACHPER Strategic Review committee and we appreciate all his hard work.

Thank you to my wonderful team Karen Burton, Janice Atkin, Clare Roden and Shannon Dixon who are motivated, passionate, and work tirelessly to support educators and make a difference in the health and physical education.

Huge thank you to our presenters, writers, educators who contribute to ACHPER NSW. We are fortunate to have such a vast variety of people sharing their expertise and knowledge, from teachers in their first five years of teaching through to academics who have been working in health and physical education for decades.

Finally, thank you to all our members, stakeholders and the health and physical education community. ACHPER NSW is your professional association and from your engagement and feedback, this organisation continues to grow and positively impact health, physical education and recreation in NSW and ACT.

We look forward to connecting and supporting you in 2023. We have an exciting professional learning program to share and hope to commence working together to deliver the new Human Movement and Science curriculum in NSW.

Warmest Regards

Tracy Puckeridge  
Chief Executive Officer

ACHPER NSW THANKS MAJOR SPONSORS



RHSports  
[www.rhsports.com.au](http://www.rhsports.com.au)



Tennis Australia  
[www.tennis.com.au](http://www.tennis.com.au)



## OUR BOARD



### **Brad McAllister, President**

Brad is currently the Assistant Principal at John Therry Catholic High School, Rosemeadow and has been a PDHPE teacher for 20 years. He has been a Board member for 8 years and has been involved in the planning and delivery of a range of workshops including the Aspiring Leaders, Quality Assessment, Job Application Process and Learning Technologies workshops.



### **Kristy O'Mahony, Vice President**

Kristy is currently a secondary school Head of PDHPE and has taught throughout NSW and overseas. She has contributed to the Sydney Morning Herald HSC Study Guide and has been a HSC marker and writer for PDHPE examinations. Kristy has been an ACHPER NSW Board Member for 7 years and has consulted with various organisations on educational and curriculum matters.



### **Kyle Sutton, Treasurer**

Kyle is currently Head Teacher PDHPE at Sydney Secondary College. He is enthusiastic and hardworking in his approach to education and has a specific focus on improving teacher quality through the use of engaging professional learning, engaging lessons and resources for student learning. Kyle holds a Bachelor of Education (Physical and Health Education) from the University of Wollongong.



### **Alex Lupton**

Alex has extensive teaching experience across all three teaching sectors. She has been a PDHPE teacher, mentor, head teacher and senior education officer and has taught all PDHPE curriculum areas. Alex has been involved in ACHPER workshops for PASS and Stage 6 PDHPE. She values PDHPE professional development as a way of enhancing student learning and teaching strategies.



### **Luke Adams**

Luke is currently the Head Teacher PDHPE in a K-12 College in the Hunter Valley and has had 15 years' experience teaching Stage 6 PDHPE. He has overseen the Google Apps for Education program at two separate schools and continues to utilise 21st century pedagogy into his daily teaching. He has been extensively involved in PDHPE and ICT teacher professional development events and resources.



### **Dominique Sidaros**

Dominique is an experienced PDHPE educator and has held leadership and executive positions in a range of Independent and Catholic schools for over 20 years. Dominique advocated and led PDHPE curriculum initiatives as Senior Curriculum Officer, PDHPE at NESA. She has contributed to a wide variety of state-wide curriculum projects, professional learning opportunities and education panels.



### **Veronica Brogden**

Veronica has a wide range of PDHPE teaching experience in NSW Independent and Catholic primary schools. She has been actively involved in the sports domain all her life as a competitor, coach, manager and convenor at all levels, from local to international. She thoroughly enjoys assisting teachers develop PDHPE programs that assist students develop life skills.



### **Angus James**

Angus is a Head Teacher of PDHPE at Sydney Secondary College Leichhardt Campus. He has extensive experience leading quality programming and assessment in PDHPE, and PASS. Angus has a genuine passion for providing and sharing enriching learning experiences that are meaningful. He enjoys keeping up to date with teaching news, pedagogy and evidence based practices.



### **Damian Hurley**

Originally from Ireland, Damian has 15 years teaching experience in the UK, including 10 years as a head teacher. He moved to Australia in 2012 and is currently Sports Organiser at Irrawang High School and has a huge interest in sports leadership. Damian was a member of the PE Pioneers group that initiated the ACHPER NSW Reimagining PE workshops. He joined the ACHPER NSW board in 2021.



### **Dr Kelly Ann Parry**

Kelly is a passionate educator with a philosophy grounded in student-centric and innovative pedagogies. She currently works in Physical Education Teacher Education and has lead PDHPE faculties in Australia and the UK. Kelly believes in supporting students to be physically literate and providing authentic learning experiences so that students can value movement. Her research focuses on games-based pedagogy and how to support teachers to teach through games.



### **Julie Percival**

Julie was the Executive Officer of ACHPER NSW for from 2000-2019, leading professional learning events in NSW across all sectors and stages. Prior to this, Julie was a secondary PDHPE teacher in regional NSW and Sydney. She is passionate about supporting teachers to deliver quality education to their students.



### **Kim Harper**

Kim currently leads a team responsible for the state-wide implementation of a mental health and suicide prevention program in NSW government high schools. An experienced PDHPE teacher and Head teacher, Kim has taught at several schools, and worked as a drug education consultant and relieving PDHPE Curriculum Advisor. Kim is passionate about PDHPE and its impact on the lives of students.



# PROFESSIONAL TEACHERS' COUNCIL NSW AWARDS

## CONGRATULATIONS TO OUR 2022 RECIPIENTS



**Tracy Puckeridge, ACHPER NSW CEO**

### **Professional Teachers' Council NSW Association Service Award**

Tracy has worked with ACHPER NSW since 2012, stepping into her leadership role in 2019. Tracy's passion for health and physical activity has led her to be a relentless advocate for the values and goals of ACHPER NSW and the PDHPE community.



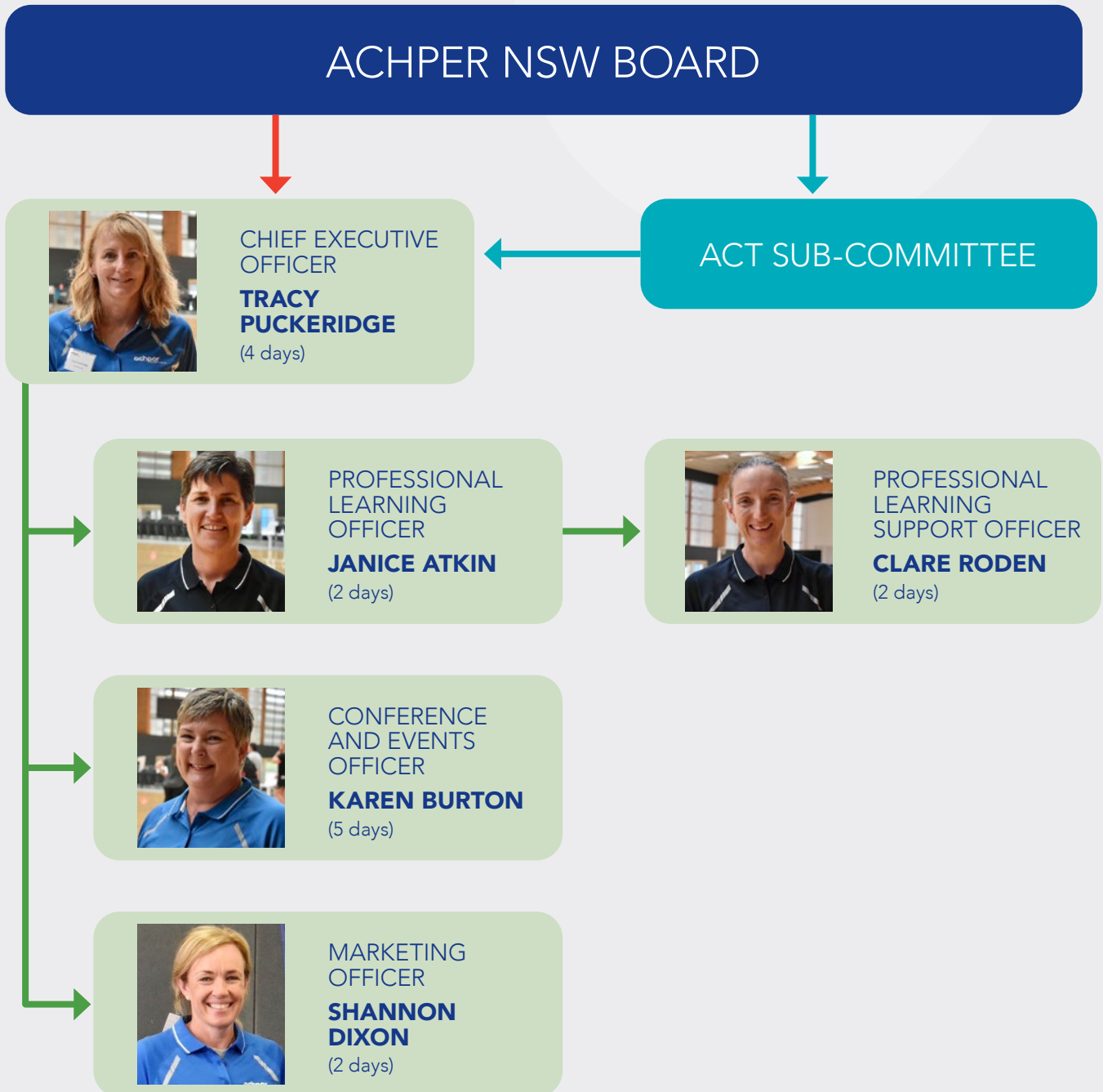
**Pam Williams**

### **Professional Teachers' Council NSW Outstanding Service Award**

For contribution to the physical activity, health education profession through ACHPER NSW.

Pam has worked with the ACHPER NSW team since 2018. She brings a wealth of experience and enthusiasm to supporting teachers. Pam has delivered a wide range of professional learning workshops across NSW and contributed to projects including the development of the Reimagining PE series. Always engaging and passionate, Pam makes an outstanding contribution to PDHPE through her work with ACHPER NSW and her role within schools.

# ACHPER NSW STAFF



# 2022 PROFESSIONAL LEARNING

## EVENTS

1,976 teachers came along to 46 professional learning events in 2022. This was a large increase on 2021 attendance and events – largely due to our return to face-to-face conferences and the curriculum update webinar.





## 2022 EVENTS

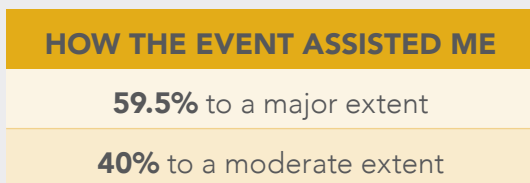
MONTH	EVENT	LOCATION	ATTENDANCE
January	School consultancy		6
February	First Time Teaching Stage 6 CAFS	Online	17
February	First Time Teaching Stage 6 PDHPE	Online	39
February	Teaching PASS	Online	28
February	Wollongong Dioceses consultancy		10
February	Teaching Child Studies	Online	10
March	Reimagining PE	Goulburn	15
March	Wollongong Dioceses consultancy		
March	Reimagining PE	Newcastle	30
March	Reimagining PE	Epping	23
March	HSC Marking Simulation PDHPE	Online and Surry Hills	35
March	HSC Marking Simulation CAFS	Online and Surry Hills	38
April	Reimagining PE	Tamworth	8
April	Reimagining PE	Coffs Harbour	15
May	Wollongong Dioceses consultancy		
May	Early Career Teacher Conference	Online and Surry Hills	87
May	HSC Marking Simulation PDHPE	Surry Hills	26
May	HSC Marking Simulation CAFS	Online and Surry Hills	14
May	Masterclass - helping low motivated students	Online	21
May	HSC Marking Simulation PDHPE	Online	40
June	Reimagining PE	Wagga Wagga	23
June	HSC Enrichment Day PDHPE	Sydney	22
June	Masterclass – Reimagine games and sports in PE	Online	34
June	HSC Enrichment Day CAFS	Sydney	13
June	HSC Enrichment Day CAFS	Online	91
June	HSC Enrichment Day PDHPE	Online	113

CONTINUED OVERPAGE

**2022 EVENTS** | CONTINUED

MONTH	EVENT	LOCATION	ATTENDANCE
July	School consultancy		120
July	School consultancy		10
July	HSC Enrichment Day PDHPE	Online	52
August	Reimagining Assessment	Wollongong	15
August	Masterclass - Vaping and e-cigarettes	Online	60
August	Reimagining PE	North Ryde	22
August	Applying for leadership roles	Online	6
August	Reimagining PE	Batemans Bay	9
August	Masterclass - Mixed ability grouped PE	Online	27
September	Masterclass - Teaching alcohol and drug-use prevention	Online	17
October	School consultancy		10
October	Reimagining PE	Kinswood	14
October	Masterclass - Planning engaging movement lessons	Online	38
November	Masterclass - Mental health promotion for young people	Online	25
November	K-12 PDHPE Conference	Strathfield	270
November	First Time Teaching Stage 6 PDHPE	Surry Hills	29
November	First Time Teaching Stage 6 CAFS	Surry Hills	38
December	Masterclass - Respectful relationships	Online	16
December	First Time Teaching Stage 6 PDHPE	Online	34
December	Curriculum reform update	Online	406
<b>Total attendees all workshops</b>			<b>1976</b>

## PROFESSIONAL LEARNING EVENTS FEEDBACK



## WHAT TEACHERS HAD TO SAY ABOUT OUR PROFESSIONAL LEARNING

“Very informative – great ideas to implement. Very good presenters – Good practical sessions.”

“Always good! Great to work with others and practically apply assessment strategies.”

“Great balance of delivery – i.e. practical lessons to put the learning into practice and theory.”

“Janice was so relevant, engaging and clear. Her modelling of the learning experiences and her ability to make the learning so enjoyable and relatable was fantastic. Her stepping us through of requirements of the syllabus made it clear and less scary.”

“I especially enjoyed and took away lots of ideas from the practical session outdoors.”

“Both presenters very knowledgeable, and shared some really effective practice which will make a difference in my future teaching.”

“Delivery was great! Janice’s passion and extent of knowledge blows me away! I feel very inspired to better my teaching.”

“The presenters were engaging, approachable and made the content of the PD clear and practical.”

“Great delivery and adequate time for collaboration.”

## INAUGURAL K-12 PDHPE CONFERENCE

Over 270 PDHPE teachers attended the inaugural ACHPER NSW K-12 PDHPE conference in Sydney 25-26 November 2022.

The two-day event was our first large scale face-to-face conference for several years – and the enthusiasm to be together, exploring ways to better health and physical education in NSW, was clear.

“It was fantastic to bring together so many people from the PDHPE community,” said Tracy Puckeridge, CEO of ACHPER NSW.

“There was a genuine buzz among the hundreds of enthusiastic delegates, presenters, exhibitors, sponsors, volunteers and the ACHPER NSW team – all of whom contributed to a great two days.

“Special mention to sponsors AFL NSW/ACT, Tennis NSW, RHSports and the Australian Catholic University for their support.





"The conference was a sell-out, a reflection on the willingness of PDHPE teachers to learn, connect and share. I think the fact that so many teachers have given up their Saturday to attend really speaks volumes about their professionalism and desire to be the best teachers they can be for their students.

"We plan for the conference to be a regular event on our professional development calendar and we look forward to seeing everyone again in 2023," said Tracy.

Over 60 workshops were delivered across the two days by experienced teachers and leading health experts.

On day one the energetic Kristen Douglas, National Education Manager headspace, delivered the keynote exploring social, emotional, and relational connection. Kristen provided practical ways to improve mental health and wellbeing in school communities. She also implored teachers that self-care was vital, highlighting that staff wellbeing was a "powerful and critical lever" in student and community wellbeing.

Dr Justen O'Connor, Associate Professor at Monash University, delivered the day two keynote asking us "Is PDHPE meeting the needs of a different physically active person?" Justen outlined shifting sport and physical activity participation patterns



in Australia and what this means for PDHPE. He proposed an expansion to the long-held four-game classification framework to include travel sports, action or trick sports and rhythmic activity.

Across the two-days workshops were delivered covering K-6, K-10, K-12, Stage 6 CAFS and Stage 6 PDHPE.

“We put together a program designed to share evidence and innovation, as well as ensure delegates walked away with at least five new ideas they could use immediately in their classrooms,” said Janice Atkin, ACHPER NSW Professional Learning Officer.

“It was all possible thanks to the 70 presenters who gave up their time to develop and deliver thoughtful and engaging sessions. We cannot thank them enough for their willingness to share knowledge and wisdom.

“It was fantastic to have presenters representing all sectors, as well as many community organisations and the Department of Education PDHPE team.

“We’re working through evaluations to take onboard ways to improve. But overall the feedback has been really positive and we look forward to doing it all again in 2023,” said Janice.



# NEW PDHPE MASTERCLASS SERIES

ACHPER NSW launched a new PDHPE Masterclass series in 2022. Masterclasses present the latest PDHPE research and evidence-based material for K-12 PDHPE teachers.

Short and interactive sessions, Masterclasses encourage collaborative conversations and sharing with like-minded PDHPE professionals. Masterclasses are also offered free to members.

## 2022 MASTERCLASSES AND PRESENTERS

<b>Helping low motivated students</b>	<ul style="list-style-type: none"> <li>• Dr Dana Perlman, University of Wollongong</li> </ul>
<b>Reimagining the way we classify and teach games and sports</b>	<ul style="list-style-type: none"> <li>• Dr Justen O'Connor, Monash University</li> <li>• Dr Laura Alfrey, Monash University</li> <li>• Professor Dawn Penney, Edith Cowan University and Monash University</li> </ul>
<b>Mixed-ability grouped PE: pros and cons</b>	<ul style="list-style-type: none"> <li>• Dr Shaun Wilkinson, Northumbria University</li> <li>• Professor Dawn Penney, Edith Cowan University and Monash University</li> </ul>
<b>Vaping and e-cigarettes</b>	<ul style="list-style-type: none"> <li>• Dr Rebecca Hodder, University of Newcastle and Hunter New England Population Health</li> <li>• Courtney Barnes, health promotion practitioner and public health researcher</li> </ul>
<b>Engaging movement lessons</b>	<ul style="list-style-type: none"> <li>• Emily McLachlan, International Grammar School</li> </ul>
<b>Teaching alcohol and drug-use prevention</b>	<ul style="list-style-type: none"> <li>• Dr Lauren Gardner, University of Sydney Matilda Centre</li> <li>• Dr Emma Devine, University of Sydney Matilda Centre</li> </ul>
<b>Mental health promotion for young people</b>	<ul style="list-style-type: none"> <li>• Matt Mulcahy, Be You National Education Advisor, headspace</li> </ul>
<b>Teaching consent</b>	<ul style="list-style-type: none"> <li>• Jenny Walsh, consultant</li> </ul>



**2022  
MASTERCLASSES  
INAUGURAL  
SERIES**



**8**  
MASTERCLASSES

**238**  
ATTENDEES

**MOST POPULAR  
MASTERCLASS**

VAPING AND  
E-CIGARETTES

**60** ATTENDEES



**FEEDBACK FROM  
MASTERCLASSES**

**Increased my knowledge and  
understanding of topic**

<b>45%</b> Strongly agree
<b>46%</b> Agree

**Helped me connect with  
experts and other teachers**

<b>39%</b> Strongly agree
<b>45%</b> Agree

**Strengthened my  
understanding of importance of  
using evidence-based research**

<b>45%</b> strongly agree
<b>42%</b> agree

“Overall, I have thoroughly enjoyed the 2022 Masterclasses and feel they have been a value for money, value-add of my membership.”





## EARLY CAREER TEACHER CONFERENCE RETURNS

For the first time in many years, ACHPER NSW staged an Early Career Teacher Conference in 2022. Held in Sydney on 20 May 2022, near 100 new teachers came along.

“It was fantastic to meet and work with such a great group of motivated new educators,” said Tracy Puckeridge, CEO ACHPER NSW.

“Support during the early years of teaching is vital. This conference was designed to share ideas, advice and support. We were grateful to all the

presenters for sharing their knowledge and offering encouragement to build the new teachers’ confidence, skills and support network.

“Big thank you to the presenters, volunteers, our Board and staff for their contribution in making the day possible, along with the Conference partners and sponsors,” said Tracy.



**The day began with a keynote panel featuring teachers at different stages of their career:**

- **Brooke Garland**  
Early Career Teacher, Wellington HS
- **Alex Lupton**  
Head Teacher, Heathcote HS
- **Lauren Andersen**  
Deputy Principal, Toronto HS
- **Louisa Bailey**  
R/Head Teacher, East Hills Girls Technology HS.

Each delivered powerful messages to the new teachers, exploring how to go from surviving to thriving in the first few years.

The experienced Alex Lupton outlined practical advice including how to settle into the school context, connect with a mentor or buddy, use the APST, observe, be open minded and ask questions.

New teacher Brooke Garland shared her experiences with great honesty saying “we’re new to this and we’re not expected to know everything.” While Louisa Bailey unpacked her best advice for the early years including to “be all in”, embrace the school and “say yes to what your passionate about”.

Lauren Andersen closed the keynote session and inspired the group to “love what you do”, listen and learn, build relationships, seek opportunity, find balance, have fun and respect your journey.



**Following the keynote, the teachers selected specialised workshops to attend, presented by experienced teachers and experts including:**

- **Class management tips and tricks**, with Pam Williams, PDHPE teacher
- **Quality assessment in PDHPE**, with Brendan Jones, Teacher Quality Advisor
- **Planning engaging and meaningful lessons in PDHPE**, with Angus Glynne, Head Teacher PDHPE
- **Report writing**, with Louisa Bailey, R/Head Teacher PDHPE
- **Parent-teacher interviews**, with Rebecca Sammut, PDHPE teacher
- **Planning inclusive theory lessons**, with Veronica Brogden, Diversity teacher
- **Inclusive practises in PE**, with Sonja Maric, PDHPE teacher
- **Difficult conversations**, with Lauren Andersen, Deputy Principal
- **Teacher wellbeing**, with Karen Halwagy, PDHPE teacher
- **Teacher accreditation**, with Alex Lupton, Head Teacher
- **Student wellbeing**, with Huw Blood, PDHPE teacher
- **Planning engaging movement lessons**, with Brendan Lee, Assistant Principal





# THANK YOU

## PRESENTERS

ACHPER NSW engages with knowledgeable teachers and academics across NSW and Australia to provide professional development opportunities for PDHPE Teachers in NSW/ACT.

We would like to say a big thank to everyone in 2022 who has given up their time to generously share their knowledge and expertise with PDHPE and CAFS, that showcases best practice and the latest evidence-based research around teaching Health and Physical Education.

A/Prof Rebecca Moles

Adam Bunce

Alex Lupton

Alex Walters

Andre Adam-De-Villers

Angus Glynne

Brendan Lee

Brendan Jones

Cassie Mowbray

Chantelle Wilson

Cindy Waldock

Clare Roden

Courtney Barnes

Damian Hannan

Damian Hurley

Dana Perlman

David Hook

Dom Sidasos

Dr Angus Leahy

Dr Courtney Barnes

Dr Debra Phillips

Dr Emma Devine

Dr Emma Pollock

Dr Justen O'Connor





Dr Kelly Ann Parry  
Dr Lauren Gardner  
Dr Levi Wade  
Dr Rebecca Hodder  
Dr Shaun Wilkinson  
Dr Stephen Carter  
Emily McLachlan  
Emmanuel Karayiannis  
Glenn Carpenter  
Holly Akhurst  
Huw Blood  
Jackie Hicks  
James Muir  
Jane Cormak  
Janice Atkin  
Jeannette James  
Jenny Walsh  
Jessica Stojkovski  
John Cunyngame

Jonathan Phuong  
Karen Halwagy  
Katherine Bates  
Kellie Kells  
Kim Harper  
Kristen Douglas  
Kristie Crawford  
Kristy Oldfield  
Kristy O'Mahony  
Kyle Sutton  
Laura Alfrey  
Lauren Andersen  
Leah Nye  
Leisl Stimpson  
Lisa Bauer  
Lisa Quinn  
Louisa Bailey  
Luke Adams  
Mark Wright  
Martin Stein  
Matt Mulcahy  
Megan Gadd

Michelle Maher  
Natalie Auremi  
Nick Mullvihill  
Nicole Wheeler  
Pam Williams  
Pat Landy  
Patricia Raikadroka  
Professor Dawn Penney  
Rebecca Jackson  
Rebecca Kennedy  
Rebecca Powell  
Rebecca Sammut-Alessi  
Renee West  
Riley McGowan  
Shannon Cameron  
Sheree Clarke  
Simon Board  
Simone Hope  
Sonja Majic  
Sonya Laverty  
Stephanie Pearce  
Terrence Kwok  
Veronica Brogden

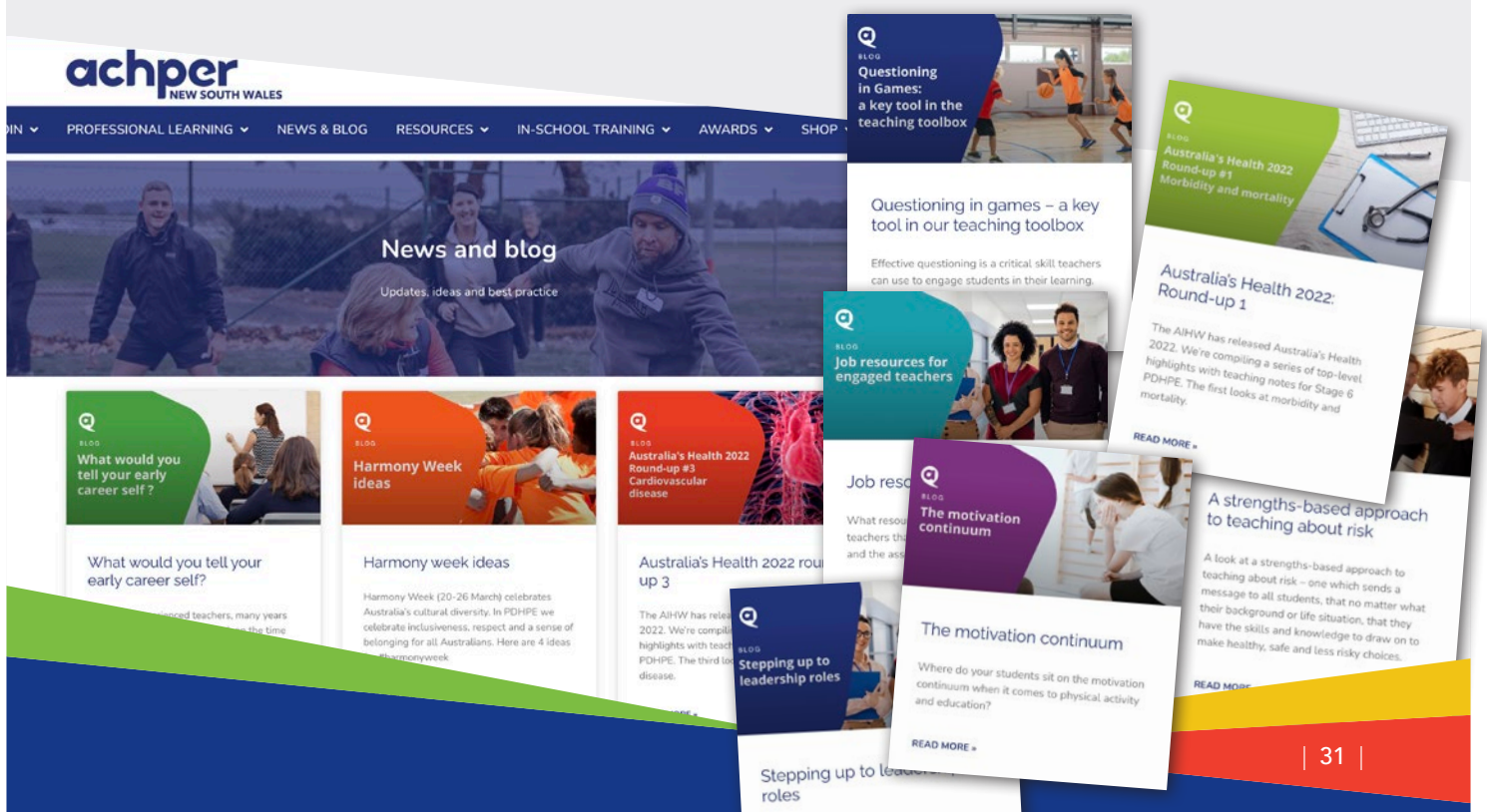


# THANK YOU

## BLOGS

Thank you to all the PE and health leaders who shared their wisdom and insights to our blog during 2022.

- **Dr Lynn Sheridan**, University of Wollongong, School of Education
- **Dr Dennis Alonzo**, University of New South Wales, School of Education
- **Hayley Dean**, health and physical educator
- **Kristy O'Mahony**, ACHPER NSW Board and Head Teacher PDHPE, Domremy Catholic College
- **Danielle Hillier**, Head Teacher PDHPE, Chifley College Senior Campus
- **Angus Glynn**, ACHPER NSW board and Head Teacher PDHPE, Sydney Secondary College
- **Kyle Sutton**, ACHPER NSW board member and Head Teacher PDHPE and Languages, Merewether High School
- **Lauren Anderson**, Deputy Principal, Toronto High School
- **Dr Kelly Ann Parry**, Lecturer, ACPE and ACHPER NSW Board member



## ACHPER NSW AWARDS

The annual ACHPER NSW/ACT PDHPE Teacher Awards recognise high-quality health and physical education. After a successful launch in 2021, this year the Awards again attracted many inspiring, quality nominations.

### Awards were given in 3 categories:

- Early career teacher
- Secondary teacher
- School / faculty

### JOINT WINNER SCHOOL / FACULTY



#### SEDA College PDHPE team

The SEDA College Stage 6 PDHPE team works with young people at risk of not finishing high school, successfully re-engaging them with learning and re-igniting their interest in their own futures.

The team incorporate physical activity, mental wellbeing, volunteering and sport industry connection into the PDHPE curriculum. Teachers work alongside students at game days and sport industry events, giving up their own time to ensure students learn responsibility and make industry connections.

The team is constantly refreshing and adapting the curriculum to accommodate different learning styles. Staff focus on reinventing their delivery to ensure it is as active and interactive as possible, to assist kinetic learners and those with learning difficulties.

The SEDA PDHPE team has achieved a completion rate of over 98% for the last 7 years. 55% of students go on to work or study in health, education, or sport and recreation.

## JOINT WINNER SCHOOL / FACULTY



### Narrabeen Sports High School PDHPE faculty

The hard-working PDHPE faculty from Narrabeen Sports High School PDHPE has transformed the way PDHPE content is delivered at their school with great results.

Through extensive review and consultation with the school community, the team developed personalised scope and sequence for PDHPE and refocussed practical

programming and assessment. This included implementation of the Sports Education in Physical Education Program.

The faculty launched a new multi-faceted online platform for students and teachers to support PDHPE delivery, engagement and evaluation. Among its features is a Google website for each program with comprehensive resources, assessment options, and enrichment activities.

The new approach support students who are often on school business for representative commitments and has led to improvement in student attainment, coursework quality and theory lesson engagement. Students are positive about the relevance and relatability of content and delivery. The online platform also enables effective program updates and seamless transition for new staff.

### HIGHLY COMMENDED – SCHOOL / FACILITY

- PDHPE faculty  
**Oran Park High School**



## WINNER EARLY CAREER TEACHER



**Samantha Rodgers**  
Narrabeen Sports High School

In her early career years Samantha has delivered exceptional teaching, development of curriculum, PDHPE processes and cutting-edge athlete support.

Samantha designed a specialist High Potential and Gifted Education (HPGE) athlete support program for Narrabeen Sports HS to meet student's personalised potential goals. It has led to improvements in attendance, individual/school achievement and performance for identified students, as well as greater parent and staff engagement.

Samantha has contributed to 7-12 PDHPE programming enhancements and implemented a successful reflective evaluation process for both staff and students. This has provided useful data in relation to programming and assessment.

She nurtures local partnerships with sporting associations and primary schools and has delivered professional learning on HGPE identification and support, to local school Principals. Samantha's work ethic, care for students and skills are an asset to her school and students.

### HIGHLY COMMENDED – EARLY CAREER TEACHER

- **Harry Menzies**  
Melba Copland Secondary School
- **Hosay Zarmati**  
Birrong Girls High School
- **Elise Campbell**  
Kildare Catholic College

## WINNER SECONDARY TEACHER



**Ross Montague**  
Picnic Point High School

Ross is an enthusiastic and highly accomplished teacher delivering innovative ways to engage all students in PE.

Ross has focussed on PE disengagement following the pandemic and lockdowns.

Utilising evidence-based data, he has developed new approaches to PE that are centred on enjoyment, non-traditional games and inclusivity.

Building on the Games Sense model, Ross developed Get Active Maintain Energy (GAME). The approach has been introduced throughout the 7-10 syllabus and is designed to encourage students to move, stay active and get off their mobile devices.

'GAME the game' has received positive feedback from the whole school community. Benefits include improved communication, decision-making and problem-solving skills, as well as improved physical and emotional outcomes for students. GAME has been adopted in several local high schools and Ross has delivered professional learning at in-school workshops and conferences.

### HIGHLY COMMENDED – SECONDARY TEACHER

- **Michelle Somers**  
Canobolas Rural Technology High School
- **Jenny Watson**  
MacKillop College Port Macquarie

## MEMBERSHIP AND AWARDS

### ACHPER NSW

#### Life Member

1966 – William Gordon Young (dec)  
1981 – John W McClean  
1984 – Elaine A Chesworth  
1988 – Dr Alf Colvin  
2002 – William Daley  
2004 – Margaret Pickup

### ACHPER NSW

#### Past Presidents

Dr Evelyn McCloughan  
Mrs Elaine Chesworth  
Dr Alf Colvin  
Dr Alan Coles  
Mr John McLean  
Dr Wilf Ewens  
Mr Robert Parker  
Ms Ann McClintock  
Mr Gordon Smith  
Mr Ian Heazlewood  
Dr John Patterson  
Mr Doug Hearne  
Ms Margaret Pickup  
Ms Janice Atkin  
Mrs Skye Gray  
Mrs Nadene Kennedy  
Ms Sarah Jackson  
Mrs Kelly Bell

### ACHPER ACT

#### Fellows

1984 – Graham Dempster  
1984 – Paul Brettell  
1984 – Brian Bradshaw  
1988 – Ian Frenchman  
1998 – June Hicks

### ACHPER NSW

#### Fellows

1982 – Frank Whitebrook (dec)  
1982 – Evelyn McCloughan  
1982 – Marjorie Swain  
1982 – Alistair Ramsay  
1982 – Hal LeMaistre  
1982 – Frank Henry (dec)  
1982 – Jean Harte  
1982 – Marie Gibson  
1982 – George Turnbull  
1984 – Allan Coles  
1984 – Dr Alf Colvin  
1984 – Wilf Ewens  
1984 – Jeffrey Miller  
1984 – David Parsons  
1984 – Betty Barnes  
1984 – Ken Booth  
1984 – Daryl Chapman  
1984 – Paul Couvert  
1984 – William Daley  
1984 – Kevin Farrell  
1984 – Joyce Grimsley  
1984 – Lola Harding-Irma (dec)  
1984 – Michael Hatton  
1984 – Eric Hawcroft  
1984 – Coralie Hinkley  
1984 – Errol Ingram  
1984 – Geoff Jackson (dec)  
1984 – Jean Neil  
1984 – Robert Parker  
1984 – Eve Redfurn (dec)  
1984 – James Rowe  
1984 – Dorothy Shackley  
1984 – Peter Trebilco  
1984 – Gordon Treble

1984 – Jeff Walker  
1985 – Andrew Whittaker  
1986 – Garry Egger  
1986 – John Miller  
1986 – Ann McClintock  
1986 – Margaret Killin  
1986 – Terry Holt  
1986 – Brian Green  
1988 – Barry Ridge  
1988 – Robert Elphinston  
1988 – Brian Booth  
1990 – Gordon Smith  
1990 – John Butt  
1993 – Colleen Wilson-Lord OAM  
1993 – Sally Macfarlane  
1998 – Ann McCormack  
1998 – Sue Wetherbee  
1998 – Craig Teece  
1998 – Margaret Pickup  
1998 – Yvonne Kerr  
1998 – Rosalind Brady  
2004 – Doug Hearne  
2007 – Bill Gavathas  
2007 – Dr John Patterson  
2008 – Ann Kershaw  
2008 – Gregg Rowland  
2010 – Janice Atkin  
2011 – Skye Gray  
2019 – Brad McAllister

### Membership milestones

#### 5 years

Greg Forrest  
Briana Fritsch  
Jaime Fernandez  
Stephanie Harrison  
Kyle Sutton  
Ken Tosen  
Sarah-Jane Turner  
Sheree Clarke  
Wayne McAuliffe  
Karin Morgan  
Helen Page  
Claire Johnson  
Yolande Jury

Holly Akhurst  
Ben Andrews  
Jon Tucker  
Veronica Brogden  
Stefanie Love  
Bryce Webster

#### 10 years

Renee West  
Kieran Fisher  
David Arthur  
Michelle Wilson  
Peter Butler  
Kim Harper  
Sandra Holden

#### 15 years

Clare Roden  
Tracey Kelty  
Steven Richards

#### 25 years

Janice Atkin  
Jenny Hall  
Brendan Jones





# FINANCIAL REPORTS



**AUSTRALIAN COUNCIL FOR HEALTH, PHYSICAL EDUCATION AND RECREATION NSW  
BRANCH INCORPORATED**

**FINANCIAL REPORT  
FOR THE YEAR ENDED  
31 DECEMBER 2022**

**Liability limited by a scheme approved under  
Professional Standards Legislation**

**AUSTRALIAN COUNCIL FOR HEALTH, PHYSICAL EDUCATION AND RECREATION NSW  
BRANCH INCORPORATED**  
**NOTES TO THE FINANCIAL STATEMENTS**  
**FOR THE YEAR ENDED 31 DECEMBER 2022**

---

## **1 Summary of Significant Accounting Policies**

The financial statements cover Australian Council for Health, Physical Education and Recreation NSW Branch Incorporated as an individual entity. Australian Council for Health, Physical Education and Recreation NSW Branch Incorporated is a not-for-profit charity under the *Australian Charities and Not-for-profits Commission Regulation 2013*. ('the Regulations').

Comparatives are consistent with prior years, unless otherwise stated.

### **Basis of Preparation**

In the opinion of the Committee of Management, the charity is not a reporting entity since there are unlikely to exist users of the financial statements who are not able to command the preparation of reports tailored so as to satisfy specifically all of their information needs. These special purpose financial statements have been prepared to meet the reporting requirements of the Regulations.

The financial statements have been prepared in accordance with the recognition and measurement requirements of the Australian Accounting Standards and Accounting Interpretations, and the disclosure requirements of:

- *AASB 101, Presentation of Financial Statements*
- *AASB 107, Statement of Cash Flows*
- *AASB 108, Accounting Policies, Changes in Accounting Estimates and Errors*
- *AASB 1054, Australian Additional Disclosures.*

Significant accounting policies adopted in the preparation of these financial statements are presented below and are consistent with prior reporting periods unless otherwise stated.

The financial statements have been prepared on an accruals basis and are based on historical costs modified, where applicable, by the measurement at fair value of selected non-current assets, financial assets and financial liabilities.

The following significant accounting policies, which are consistent with the previous period unless stated otherwise, have been adopted in the preparation of this financial report.

### **Plant and Equipment**

Plant and equipment is carried at cost less, where applicable, any accumulated depreciation.

The depreciable amount of all plant and equipment is depreciated over the useful lives of the assets to the charity commencing from the time the asset is held ready for use.

**AUSTRALIAN COUNCIL FOR HEALTH, PHYSICAL EDUCATION AND RECREATION NSW  
BRANCH INCORPORATED**

**NOTES TO THE FINANCIAL STATEMENTS  
FOR THE YEAR ENDED 31 DECEMBER 2022**

---

**Impairment of Non-Financial Assets**

At the end of each reporting period the charity determines whether there is evidence of an impairment indicator for non-financial assets.

Where this indicator exists and regardless for goodwill, indefinite life intangible assets and intangible assets not yet available for use, the recoverable amount of the assets is estimated.

Where assets do not operate independently of other assets, the recoverable amount of the relevant cash-generating unit (CGU) is estimated.

The recoverable amount of an asset or CGU is the higher of the fair value less costs of disposal and the value in use. Value in use is the present value of the future cash flows expected to be derived from an asset or cash-generating unit.

Where the recoverable amount is less than the carrying amount, an impairment loss is recognised in profit or loss.

Reversal indicators are considered in subsequent periods for all assets which have suffered an impairment loss, except for goodwill.

**Cash and Cash Equivalents**

Cash and cash equivalents include cash on hand, deposits held at call with banks, other short term highly liquid investments with original maturities of three months or less.

**Revenue and Other Income**

Revenue is recognised when the amount of the revenue can be measured reliably, it is probable that economic benefits associated with the transaction will flow to the charity and specific criteria relating to the type of revenue as noted below, has been satisfied.

Revenue is measured at the fair value of the consideration received or receivable and is presented net of returns, discounts and rebates.

**Interest revenue**

Interest revenue is recognised using the effective interest rate method.

**Dividend revenue**

Dividend revenue is recognised when the right to receive a dividend has been established.

**Rendering of services**

Revenue in relation to rendering of services is recognised depends on whether the outcome of the services can be measured reliably. If this is the case then the stage of completion of the services is used to determine the appropriate level of revenue to be recognised in the period. If the outcome cannot be reliably measured then revenue is recognised to the extent of expenses recognised that are recoverable.



**AUSTRALIAN COUNCIL FOR HEALTH, PHYSICAL EDUCATION AND RECREATION NSW  
BRANCH INCORPORATED**

**NOTES TO THE FINANCIAL STATEMENTS  
FOR THE YEAR ENDED 31 DECEMBER 2022**

---

**Income Tax**

The charity is exempt from income tax under Division 50 of the *Income Tax Assessment Act 1997*.

**AUSTRALIAN COUNCIL FOR HEALTH, PHYSICAL EDUCATION AND RECREATION NSW  
BRANCH INCORPORATED**

**NOTES TO THE FINANCIAL STATEMENTS  
FOR THE YEAR ENDED 31 DECEMBER 2022**

		2022 (\$)	2021 (\$)
<b>2</b>	<b>Income</b>		
	Income from Operations	368,846	243,519
	Income from Grants	37,020	66,537
	Interest Income	328	457
	Total Income	406,194	310,512
<b>3</b>	<b>Cash</b>		
	Cash at Bank	612,589	656,414
	Term Deposits	163,195	162,867
	Business Credit Cards	11,431	5,843
	Stripe Account	(1,870)	-
		785,345	825,124
<b>4</b>	<b>Receivables</b>		
	Trade Debtors	32,444	17,860
	Trade Receivables	40,284	51,219
	Other Receivables	88	-
		72,817	69,079
<b>5</b>	<b>Prepayments</b>		
	Prepayments	12,390	-
		12,390	-
<b>6</b>	<b>Property, Plant &amp; Equipment</b>		
	Office Equipment at Cost	64,860	64,860
	Less: Accumulated Depreciation	(64,606)	(64,352)
		254	508
<b>7</b>	<b>Payables</b>		
	Superannuation	5,429	5,026
	Trade Creditors	18,460	15,633
		23,889	20,659

**AUSTRALIAN COUNCIL FOR HEALTH, PHYSICAL EDUCATION AND RECREATION NSW  
BRANCH INCORPORATED**

**NOTES TO THE FINANCIAL STATEMENTS  
FOR THE YEAR ENDED 31 DECEMBER 2022**

	2022 (\$)	2021 (\$)
<b>8 Tax Liabilities</b>		
Goods and Services Tax	3,655	7,321
Payroll Liabilities	-	3,636
	3,655	10,957
<b>9 Provisions</b>		
<u>Current</u>		
Employee Entitlements	37,966	29,653
	37,966	29,653
<u>Non-Current</u>		
Employee Entitlements	13,511	12,219
	13,511	12,219

**AUSTRALIAN COUNCIL FOR HEALTH, PHYSICAL EDUCATION AND RECREATION NSW  
BRANCH INCORPORATED**


**RESPONSIBLE PERSONS' DECLARATION FOR THE YEAR ENDED 31 DECEMBER 2022**

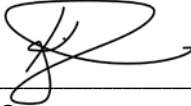
The responsible persons have determined that the charity is not a reporting entity and that this special purpose financial report should be prepared in accordance with the accounting policies outlined in Note 1 to the financial statements.

In the opinion of the Board the financial report as set out on pages 1 to 10:

1. Presents a true and fair view of the financial position of Australian Council for Health, Physical Education and Recreation NSW Branch Incorporated as at 31 December 2022 and its performance for the year ended on that date.
2. At the date of this statement, there are reasonable grounds to believe that Australian Council for Health, Physical Education and Recreation NSW Branch Incorporated will be able to pay its debts as and when they fall due.

This statement is made in accordance with a resolution of the Board and is signed for and on behalf of the Board by:

**President:**   
\_\_\_\_\_  
Bradley McAllister

**Treasurer:**   
\_\_\_\_\_  
Kyle Sutton

**Dated this 28th day of March 2023**




**AUSTRALIAN COUNCIL FOR HEALTH, PHYSICAL EDUCATION AND RECREATION NSW  
BRANCH INCORPORATED**

**CERTIFICATE BY RESPONSIBLE PERSONS'**

I, Bradley McAllister, certify that:

- (a) I attended the annual general meeting of the charity held on 28 March 2023.
- (b) The financial statements for the year ended 31 December 2022 were submitted to the members of the charity at its annual general meeting.

**Dated this 28th March 2023**

**Committee Member:**   
Bradley McAllister

**AUSTRALIAN COUNCIL FOR HEALTH, PHYSICAL EDUCATION AND RECREATION NSW  
BRANCH INCORPORATED**

**CONTENTS**

Responsible Persons' Report

Auditor's Independence Declaration

Income Statement

Balance Sheet

Notes to the Financial Statements

Responsible Persons' Declaration

Auditors' Report

Certificate by Responsible Persons'



**AUSTRALIAN COUNCIL FOR HEALTH, PHYSICAL EDUCATION AND RECREATION NSW  
BRANCH INCORPORATED**

**RESPONSIBLE PERSONS' REPORT**

Your board presents the financial report of the Australian Council for Health, Physical Education and Recreation NSW Branch Incorporated for the financial year ended 31 December 2022.

**Responsible Persons**

The name of each responsible person during the period and, if different, at the date of the report:

Bradley McAllister  
Alexandra Lupton  
Kyle Sutton  
Kristy O'Mahony  
Dominique Sidaros  
Luke Adams  
Angus Glynne  
Damian Hurley  
Veronica Brogden (resigned 29/08/2022)  
Cindy Waldock (resigned 21/3/2022)  
Elaine Waldock (resigned 15/2/2022)  
Danielle Hillier (resigned 15/2/2022)  
Kim Harper (appointed 29/3/2022)  
Julie Percival (appointed 29/3/2022)  
Dr Kelly Ann Parry (appointed 29/3/2022)

**Principal Activities**

The principal activity of the charity during the financial year was to provide professional support for teachers and students of health and physical education.

**Significant Changes**

No significant change in the nature of these activities occurred during the period.

**Operating Result**

The deficit of the charity amounted to \$36,026 (2021 deficit: \$56,905).

Signed in accordance with a resolution of the Responsible Persons.



**AUSTRALIAN COUNCIL FOR HEALTH, PHYSICAL EDUCATION AND RECREATION NSW  
BRANCH INCORPORATED**

**RESPONSIBLE PERSONS' REPORT**

A handwritten signature in black ink, appearing to read 'B. McAllister', written over a horizontal line.

**President:**

Bradley McAllister

A handwritten signature in black ink, appearing to read 'Kyle Sutton', written over a horizontal line.

**Treasurer:**

Kyle Sutton

**Dated this 28th day of March 2023**



## **Auditor's Independence Declaration**

**To the Board of the Australian Council for Health, Physical Education & Recreation NSW Branch Inc**

I declare that, to the best of my knowledge and belief, during the year ended 31 December 2022 there has been:

- (i) no contraventions of any applicable code of professional conduct in relation to the audit.



**Rodney Wagner**  
**Flegg Kehlet Wagner Chartered Accountants**  
**Registered Company Auditor Number: 433830**

**Gregory Hills**  
Dated this 28th day of March 2023.

## **Independent Auditor's Report**

### **To the Board of Australian Council for Health, Physical Education & Recreation NSW Branch Inc**

#### **Opinion**

We have audited the financial report of Australian Council for Health, Physical Education & Recreation NSW Branch Inc. ("the Entity"), which comprises the Committee's report, Statement by Members of the Committee, Income statement, Balance Sheet, and Notes to the Financial Statements for the financial year ended 31 December 2022.

In our opinion, the accompanying financial report of the Entity is prepared, in all material respects, in accordance with the accounting policies described in Note 1 to the financial report.

#### **Basis for Opinion**

We conducted our audit in accordance with Australian Auditing Standards. Our responsibilities under those standards are further described in the *Auditor's Responsibilities for the Audit of the Financial Report* section of our report. We are independent of the Entity in accordance with the ethical requirements of the Accounting Professional and Ethical Standards Board's APES 110 *Code of Ethics for Professional Accountants* (the Code) that are relevant to our audit of the financial report in Australia. We have also fulfilled our other responsibilities in accordance with the Code. We believe that the audit evidence we have obtained is sufficient and appropriate to provide a basis for our opinion.

#### **Responsibilities of the Board and Those Charged with Governance for the Financial Report**

The Board is responsible for the preparation of the financial report in accordance with the accounting policies described in Note 1 to the financial report, and for such internal control as the Board determines is necessary to enable the preparation of the financial report that is free from material misstatement, whether due to fraud or error.

In preparing the financial report, the Board is responsible for assessing the Entity's ability to continue as a going concern, disclosing, as applicable, matters related to going concern and using the going concern basis of accounting unless the Board either intends to liquidate the Entity or to cease operations, or has no realistic alternative but to do so.

Those charged with governance are responsible for overseeing the Entity's financial reporting process.

#### **Auditor's Responsibilities for the Audit of the Financial Report**

Our objectives are to obtain reasonable assurance about whether the financial report as a whole is free from material misstatement, whether due to fraud or error, and to issue an auditor's report that includes our opinion. Reasonable assurance is a high level of assurance, but is not a guarantee that an audit conducted in accordance with Australian Auditing Standards will always detect a material misstatement when it exists. Misstatements can arise from fraud or error and are considered material if, individually or in the aggregate, they could reasonably be expected to influence the economic decisions of users taken on the basis of the financial report.

As part of an audit in accordance with Australian Auditing Standards, we exercise professional judgement and maintain professional scepticism throughout the audit. We also:

- Identify and assess the risks of material misstatement of the financial report, whether due to fraud or error, design and perform audit procedures responsive to those risks, and obtain audit evidence that is sufficient and appropriate to provide a basis for our opinion. The risk of not detecting a material misstatement resulting from fraud is higher than for one resulting from error, as fraud may involve collusion, forgery, intentional omissions, misrepresentations, or the override of internal control.
- Obtain an understanding of internal control relevant to the audit in order to design audit procedures that are appropriate in the circumstances, but not for the purpose of expressing an opinion on the effectiveness of the Entity's internal control.
- Evaluate the appropriateness of accounting policies used and the reasonableness of accounting estimates and related disclosures made by the Board.
- Conclude on the appropriateness of the Board's use of the going concern basis of accounting and, based on the audit evidence obtained, whether a material uncertainty exists related to events or conditions that may cast significant doubt on the Entity's ability to continue as a going concern. If we conclude that a material uncertainty exists, we are required to draw attention in our auditor's report to the related disclosures in the financial report or, if such disclosures are inadequate, to modify our opinion. Our conclusions are based on the audit evidence obtained up to the date of our auditor's report. However, future events or conditions may cause the Entity to cease to continue as a going concern.

We communicate with those charged with governance regarding, among other matters, the planned scope and timing of the audit and significant audit findings, including any significant deficiencies in internal control that we identify during our audit.

**Rodney Wagner**  
**Flegg Kehlet Wagner Chartered Accountants**  
**Registered Company Auditor Number: 433830**

**Gregory Hills**  
Dated this 28th day of March 2023

**AUSTRALIAN COUNCIL FOR HEALTH PHYSICAL EDUCATION & RECREATION NSW BRANCH INC**  
**INCOME STATEMENT**  
**FOR THE YEAR ENDED 31ST DECEMBER 2022**

	2022	2021
	\$	\$
<b>Income</b>		
Membership	509	255
Royalties	4,280	5,457
Conferences & Workshops	350,455	237,807
State Government Grants	37,020	47,337
JobKeeper Payments	-	19,200
Interest Received	328	457
Other Income	13,601	-
<b>Total Income</b>	<b>406,194</b>	<b>310,512</b>
<b>Expenses</b>		
Advertising & Promotion	10,514	1,271
Audit Fees	3,300	3,200
Bank Fees	4,557	3,346
Bookkeeping	9,530	5,275
Computer/Copier Expenses	12,088	8,423
Contractors	38,041	37,589
Depreciation	254	508
Filing Fees	202	-
General Expenses	164	-
Insurance	3,663	12,826
Membership - Association	2,281	5,545
Membership - Complimentary	12,075	9,653
Postage	693	546
Printing & Stationery	1,672	1,473
Rent	14,496	13,104
Subscriptions	4,861	3,945
Telephone	2,743	2,488
Workshops, Conferences & Meetings	69,242	25,923
Website	3,386	-
Wages & Salaries	210,091	193,290
Employee Leave Accruals	9,605	12,185
Staff Amenities	7,373	8,068
Superannuation	21,388	18,760
<b>Total Expenses</b>	<b>442,220</b>	<b>367,418</b>
<b>Excess Income / (Expenditure)</b>	<b>(36,026)</b>	<b>(56,905)</b>

**AUSTRALIAN COUNCIL FOR HEALTH PHYSICAL EDUCATION & RECREATION NSW BRANCH INC**  
**BALANCE SHEET**  
**AS AT 31ST DECEMBER 2022**

<b>Assets</b>	<b>Note</b>	<b>2022</b>	<b>2021</b>
		<b>\$</b>	<b>\$</b>
<b>Current Assets</b>			
Cash	3	785,345	825,124
Receivables	4	72,817	69,079
Prepayments	5	12,390	
<b>Total Current Assets</b>		<b>870,552</b>	<b>894,203</b>
<b>Non-Current Assets</b>			
Property, Plant & Equipment	6	254	508
<b>Total Non-Current Assets</b>		<b>254</b>	<b>508</b>
<b>Total Assets</b>		<b>870,806</b>	<b>894,711</b>
<b>Current Liabilities</b>			
Payables	7	23,889	20,659
Tax Liabilities	8	3,655	10,957
Provisions	9	37,966	29,653
Income Received in Advance		6,588	
<b>Total Current Liabilities</b>		<b>72,098</b>	<b>61,269</b>
<b>Non-Current Liabilities</b>			
Provisions	9	13,511	12,219
<b>Total Non-Current Liabilities</b>		<b>13,511</b>	<b>12,219</b>
<b>Total Liabilities</b>		<b>85,609</b>	<b>73,488</b>
<b>Net Assets</b>		<b>785,197</b>	<b>821,223</b>
<b>Members' Funds</b>			
Opening Balance - 1 January		821,223	878,129
Current Year Excess Income / (Expenditure)		(36,026)	(56,905)
<b>Total Members' Funds</b>		<b>785,197</b>	<b>821,223</b>